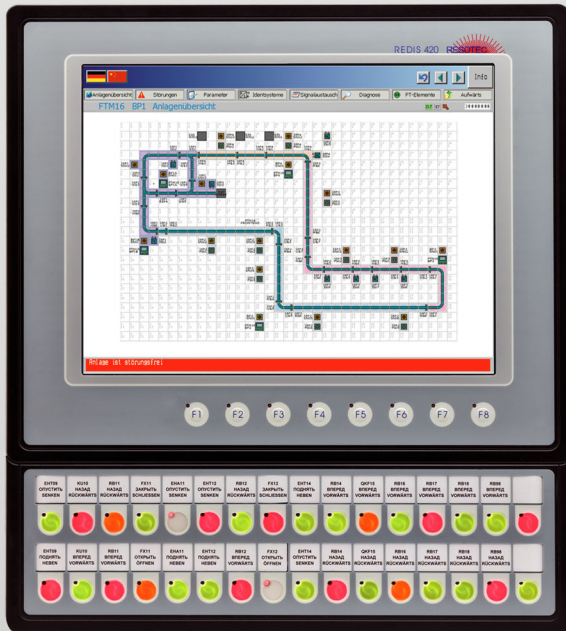


Datasheet REDIS 420 BP



- Operating unit for sophisticated machines and plants with keyboard module
- Fast and safe real-time operating system
- Easy to service and maintenance-free
- Various industrial and network interfaces
- Direct control tasks via soft PLC and integrated I/O levels

Technical Data

Display	
Type	TFT
Colors	65535
Diagonal (inch)	15
Format	4:3
Resolution	1024 x 768 pixels
Back lighting	LED
Durability at 25 °C	Approx. 50.000 h
Brightness	400 Cd/m ² (center, type)
Contrast	700 : 1 (type)
Touch	
Technology	Analog resistive
Multitouch	no
Surface	Foil
Transparence	Light transmission 80 %
Buttons	
Touch buttons	8 function keys
Process buttons modul BP 32	32 hort-stroke keys, 3-colored, status LEDs, with push-in strips
Process buttons modul BP 64	64 hort-stroke keys, 3-colored, status LEDs, with push-in strips
Process buttons modul BP 128	128 hort-stroke keys, 3-colored, status LEDs, with push-in strips
Interfaces	
Ethernet ^{® 3)}	1 x RJ45 (10/100 MBit)
USB external	3 x USB 2.0
Serial interfaces (RT Target™)	2 x RS232/422/485 selectable
Fieldbus interfaces	
PROFIBUS [®] -DP Slave (RT Target™) ²⁾	With additional module (optional)

PROFIBUS®-DP Master (RT Target™) ²⁾	With additional module (optional)
PROFINET®-IO Device (RT Target™) ¹⁾	With additional module (optional)
Processor	
CPU	Intel® Atom™ Prozessor 1,1 GHz
CPU (option Windows™)	no
Memory	
RAM	512 MB
CF card	256 MB
Add. storage media	no
Clock	
Hardware clock	Buffered, can be synchronized
Extensions	
Digital I/O	With additional module, 16 inputs, 16 outputs (optional)
Electrical Connection	
Power supply	25 V DC, -15 % to +20 % acc. to EN 61131-2
Current drawn	Approx. 2 A
Power consumption	Approx. 40 W
Protection	
Front	IP 65 acc. to EN 60529
Rear	IP 20 acc. to EN 60529
Environmental Conditions	
Operating temperature	0 to 50 °C
Storage temperature	-20 to 60 °C
Relative humidity	<80 %
Housing	
Overall dimensions (W x H) in mm	BP 32: 420 x 466; BP 64: 420 x 591;BP 128: 420 x 841
Cut-out dimensions (W x H) in mm	BP 32: 402 ⁺¹ x 448 ⁺¹ ; BP 64: 402 ⁺¹ x 573 ⁺¹ ; BP 128: 402 ⁺¹ x 823 ⁺¹
Mounting depth	Approx. 80 mm without connector
Front panel	Aluminum front panel with design foil
Housing lid	Stainless steel
Weight	6.2 kg; 7.6 kg; 9.8 kg
Certificates and Approvals	
CE conformity	EN 61000-6-4 emission, EN 61000-6-2 immunity
Operating Systems	
RT Target™	Up to version 15.15
RT Target™ with soft PLC	Codesys™ version 2.3 (option)
Windows™	no
Projecting	VISU4WINners from version 10 (using RT Target™)
Communication Protocols	
Profibus-DP Slave, S7-Ethernet, Profinet IO, Modbus RTU, VNC Server (option software licence), VNC Client (option software licence), FTP Server (TCP/IP), Resotec OPC (option software licence), Profibus-DP Master (option using soft PLC)	
Order no	
92141 XXXX: REDIS 420 BPXX	

¹⁾ PROFINET® IO and the PROFINET® logo are registered trademarks of PROFINET® user organization e.V. (PNO)

²⁾ PROFIBUS®-DP and the PROFIBUS® logo are registered trademarks of PROFIBUS® user organization e.V. (PNO)

³⁾ Ethernet/IP® is a registered trademark of Xerox Corporation.